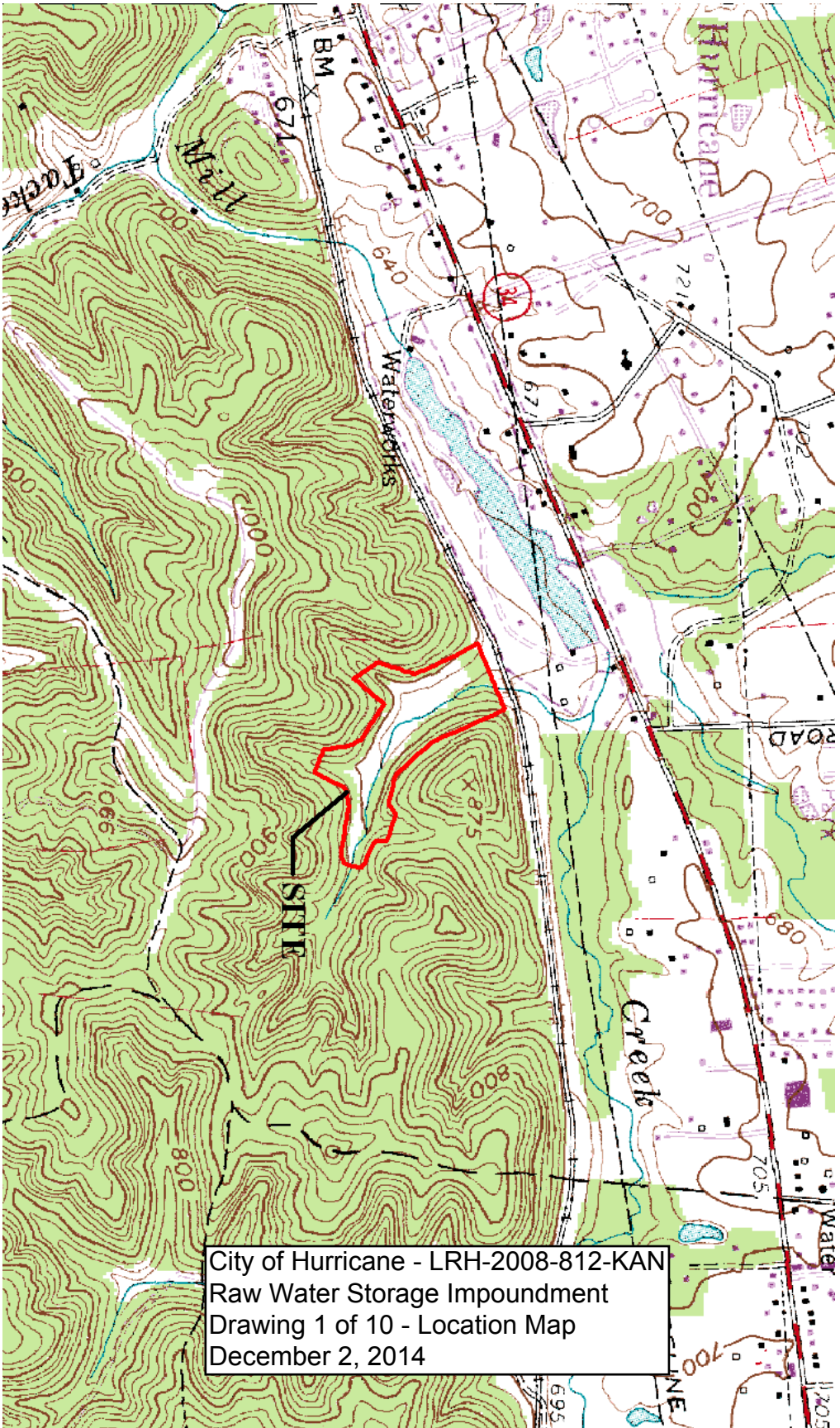
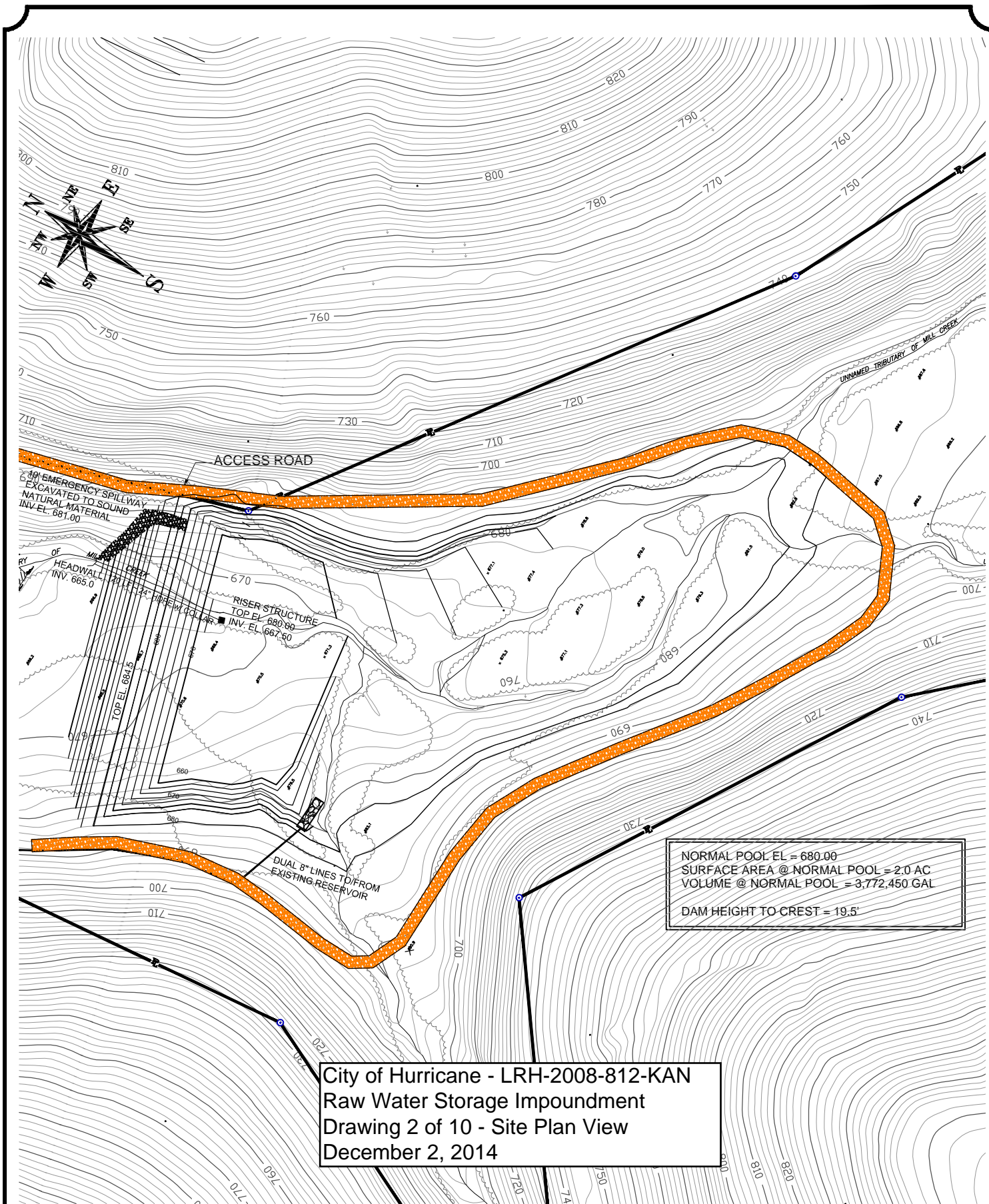


**The following document is not readable via Optical Character Recognition. For more information or if you require the document to be read aloud please call: 304-399-5353**

USGS Topographic Map  
Hurricane Raw Water Storage  
Putnam County, WV

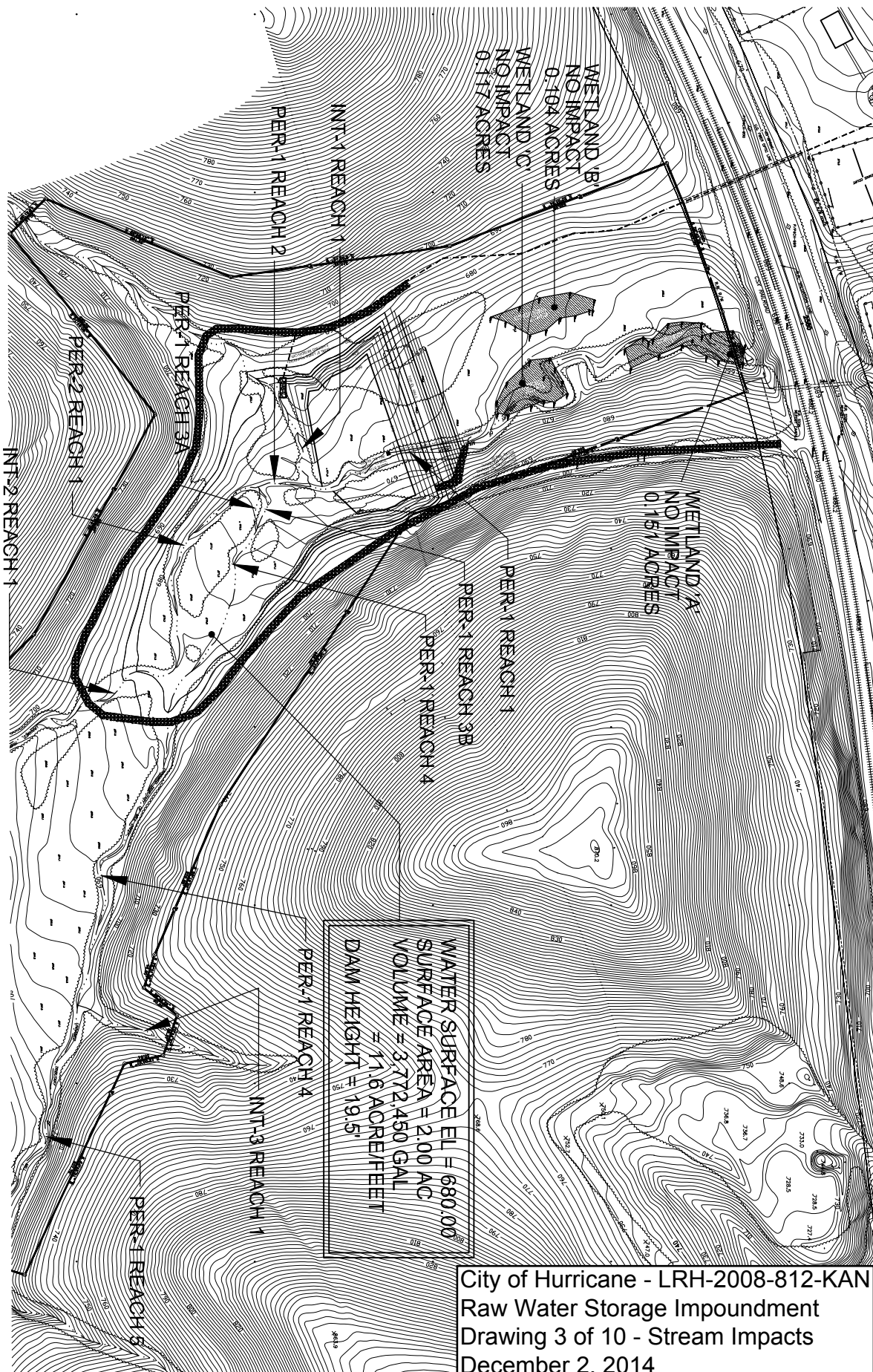




NORMAL POOL EL = 680.00  
SURFACE AREA @ NORMAL POOL = 2.0 AC  
VOLUME @ NORMAL POOL = 3,772,450 GAL  
DAM HEIGHT TO CREST = 19.5'

City of Hurricane - LRH-2008-812-KAN  
Raw Water Storage Impoundment  
Drawing 2 of 10 - Site Plan View  
December 2, 2014





City of Hurricane - LRH-2008-812-KAN  
Raw Water Storage Impoundment  
Drawing 3 of 10 - Stream Impacts  
December 2, 2014

STREAM IMPACTS			IMPACT DUE TO:
DESIGNATION	DISTANCE	CLASSIFICATION	
PER 1-REACH 1	120'	PERENNIAL	FILL
PER 1-REACH 2	75'	PERENNIAL	CHANGE OF HABITAT
PER 1-REACH 3A	64'	PERENNIAL	CHANGE OF HABITAT
PER 1-REACH 3B	72'	PERENNIAL	CHANGE OF HABITAT
PER 1-REACH 4	224'	PERENNIAL	CHANGE OF HABITAT
PER 2-REACH 1	313'	PERENNIAL	CHANGE OF HABITAT
INT 1-REACH 1	168'	INTERMITTENT	CHANGE OF HABITAT
INT 2-REACH 1	0'	INTERMITTENT	CHANGE OF HABITAT

PERENNIAL STREAM  
INTERMITTENT STREAM  
WETLAND BOUNDARY  
REPORTING BOUNDARY &  
WETLAND ASSESSMENT LIMIT

DRAWN BY: LAS DATE: 8/18/14

PROJECT NUMBER: 2008036

**RANDOLPH**  
ENGINEERING

ACCESS ROAD

10' EMERGENCY SPILLWAY  
EXCAVATED TO SOUND  
NATURAL MATERIAL  
INV. EL. 681.00

OF  
HEADWALL  
INV. 665.0

120 LF ~ 24" HDPE W/ COLLAR

RISER STRUCTURE  
TOP EL. 680.00  
INV. EL. 667.50

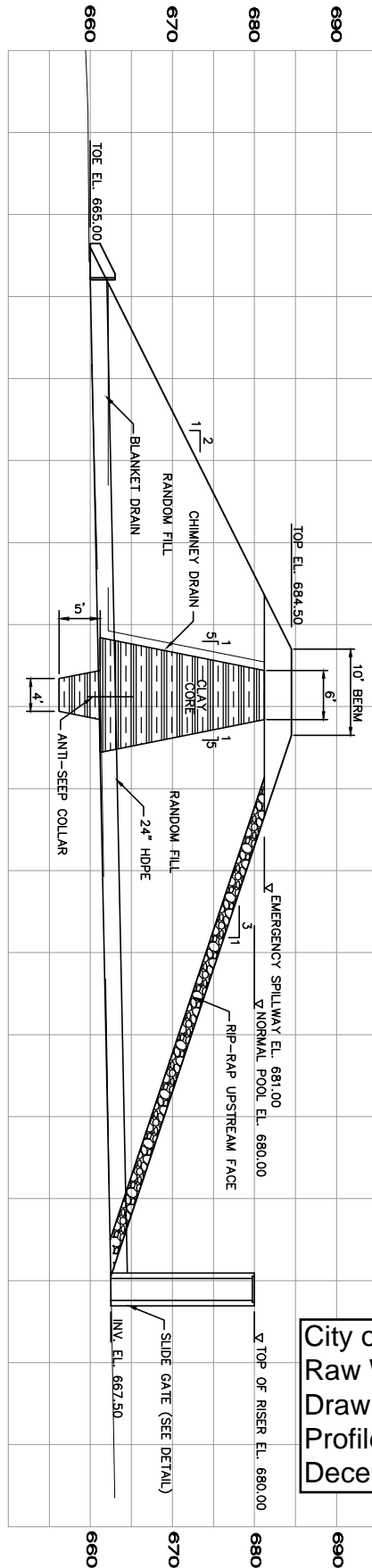
TOP EL. 684.5

City of Hurricane - LRH-2008-812-KAN  
Raw Water Storage Impoundment  
Drawing 4 of 10 - Impoundment Structure  
Plan View  
December 2, 2014

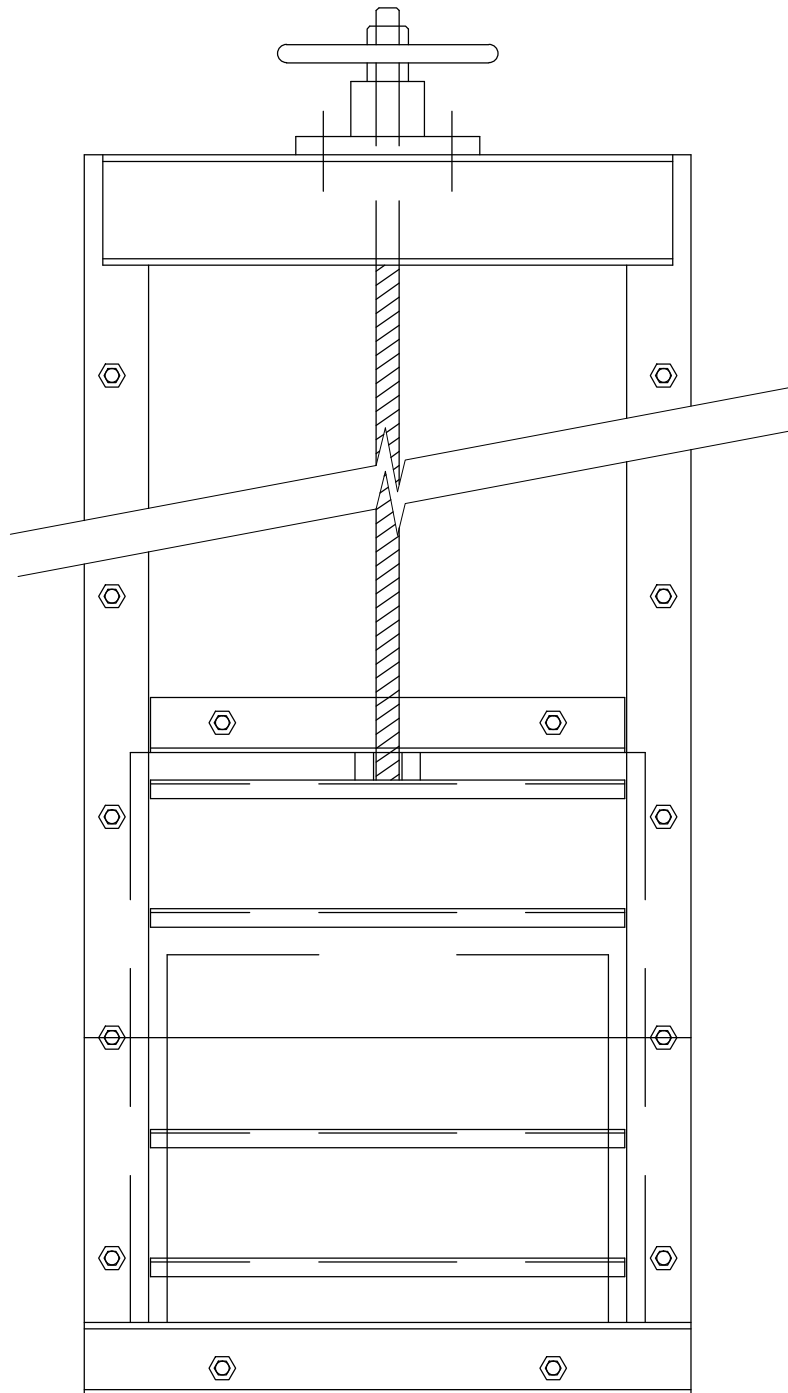
DUAL 8" LINES TO/FROM  
EXISTING RESERVOIR

DRAWN BY: \_\_\_\_\_ LAS \_\_\_\_\_ DATE: \_\_\_\_\_ 8/7/14  
PROJECT NUMBER: \_\_\_\_\_ 2008036 \_\_\_\_\_





City of Hurricane - LRH-2008-812-KAN  
 Raw Water Storage Impoundment  
 Drawing 5 of 10 - Impoundment Structure  
 Profile View  
 December 2, 2014

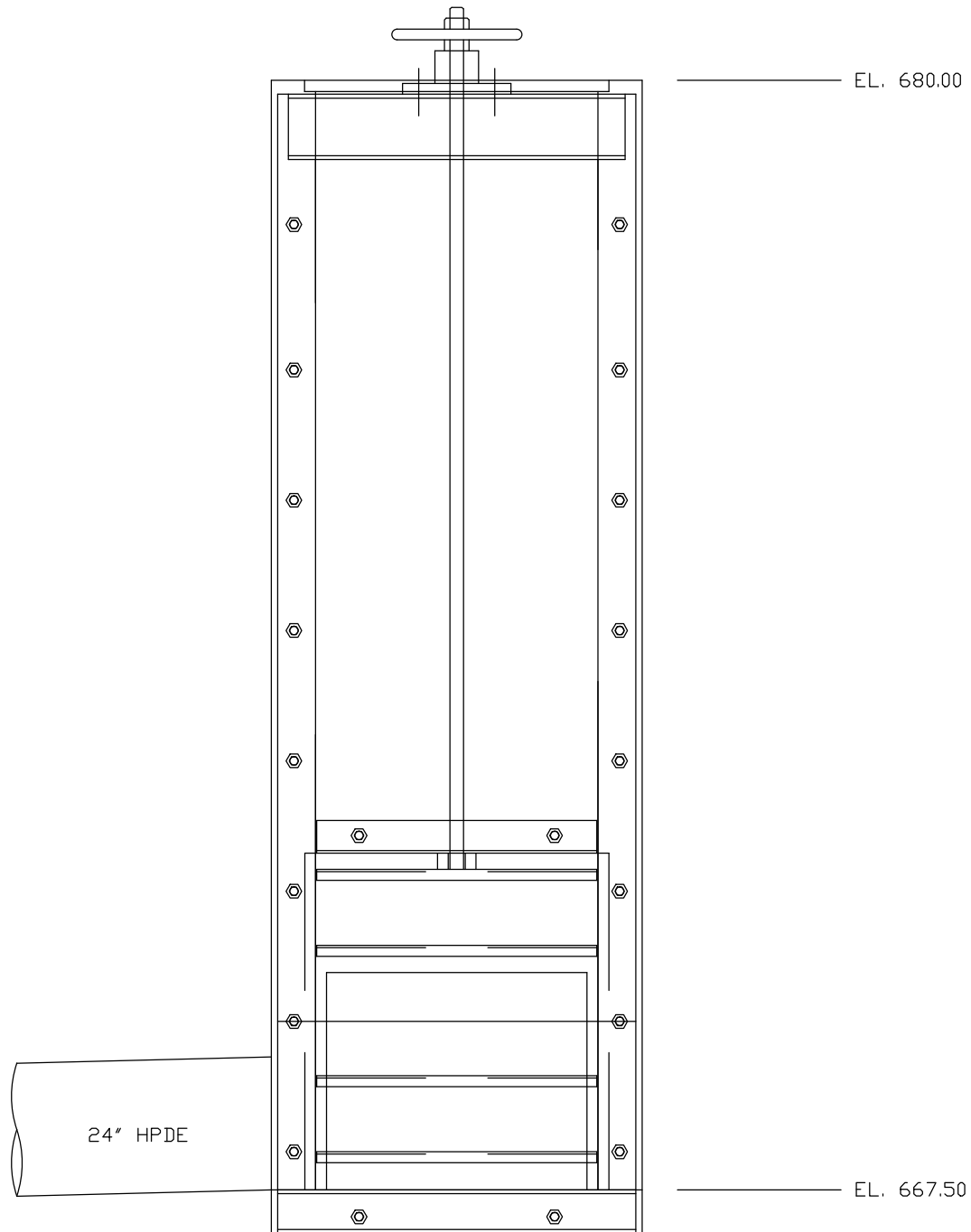


City of Hurricane - LRH-2008-812-KAN  
Raw Water Storage Impoundment  
Drawing 6 of 10 - Slide Gate Details  
December 2, 2014

SLIDE GATE ELEVATION

DRAWN BY: \_\_\_\_\_ LAS \_\_\_\_\_ DATE: \_\_\_\_\_ 8/7/14 \_\_\_\_\_  
PROJECT NUMBER: \_\_\_\_\_ 2008036 \_\_\_\_\_

**R** RANDOLPH  
ENGINEERING



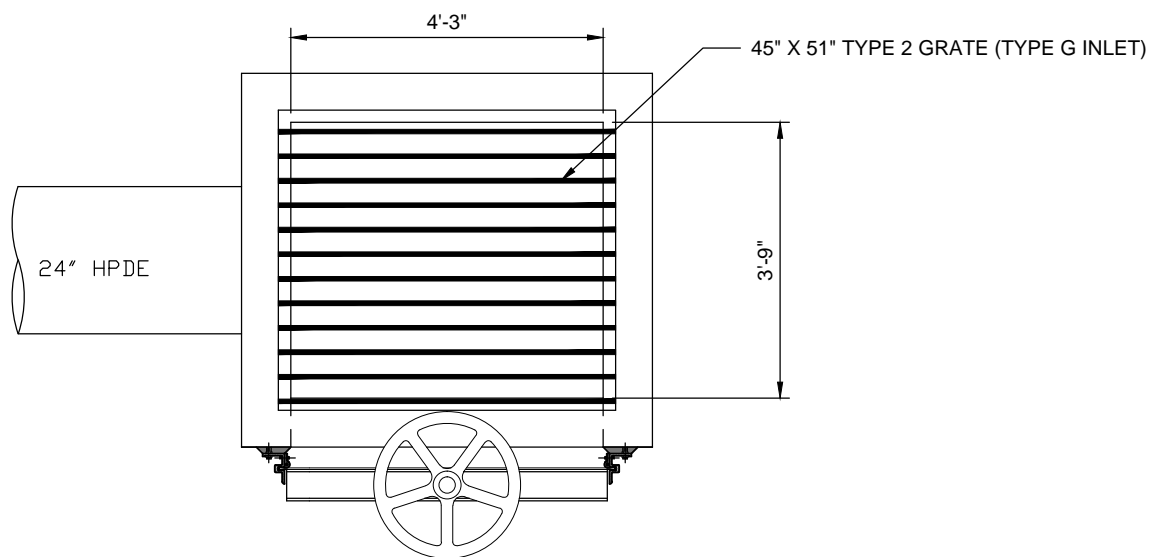
City of Hurricane - LRH-2008-812-KAN  
 Raw Water Storage Impoundment  
 Drawing 7 of 10 - Slide Gate Details  
 December 2, 2014

INLET ELEVATION

DRAWN BY: LAS DATE: 8/7/14  
 PROJECT NUMBER: 2008036

**R** RANDOLPH  
 ENGINEERING



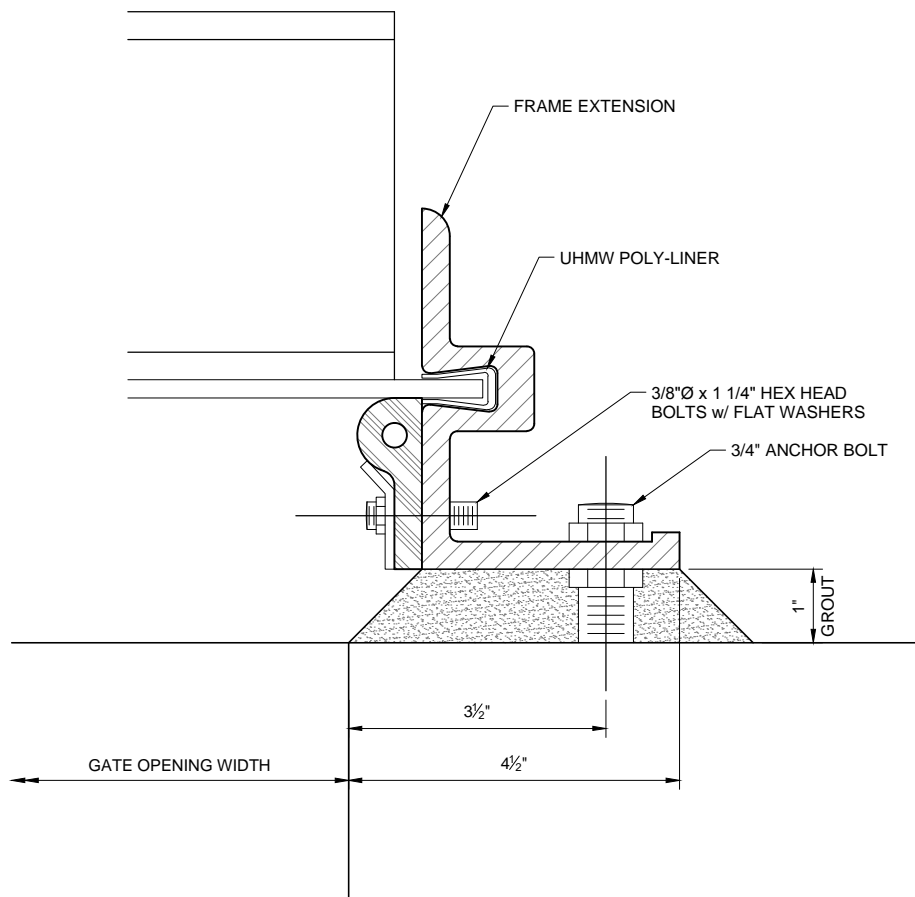


INLET PLAN

City of Hurricane - LRH-2008-812-KAN  
 Raw Water Storage Impoundment  
 Drawing 8 of 10 - Slide Gate Details  
 December 2, 2014

DRAWN BY: LAS DATE: 8/7/14  
 PROJECT NUMBER: 2008036

**R** RANDOLPH  
 ENGINEERING

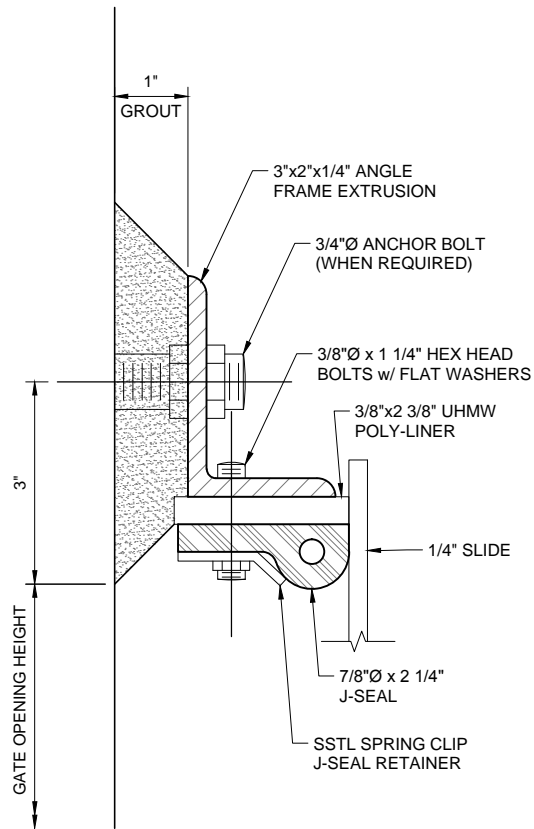


SIDE SEAL DETAIL

City of Hurricane - LRH-2008-812-KAN  
 Raw Water Storage Impoundment  
 Drawing 9 of 10 - Slide Gate Details  
 December 2, 2014

DRAWN BY: LAS DATE: 8/7/14  
 PROJECT NUMBER: 2008036

**R** RANDOLPH  
 ENGINEERING



TOP SEAL DETAIL

City of Hurricane - LRH-2008-812-KAN  
Raw Water Storage Impoundment  
Drawing 10 of 10 - Slide Gate Details  
December 2, 2014

DRAWN BY: \_\_\_\_\_ LAS \_\_\_\_\_ DATE: \_\_\_\_\_ 8/7/14 \_\_\_\_\_  
PROJECT NUMBER: \_\_\_\_\_ 2008036 \_\_\_\_\_

**R** RANDOLPH  
ENGINEERING